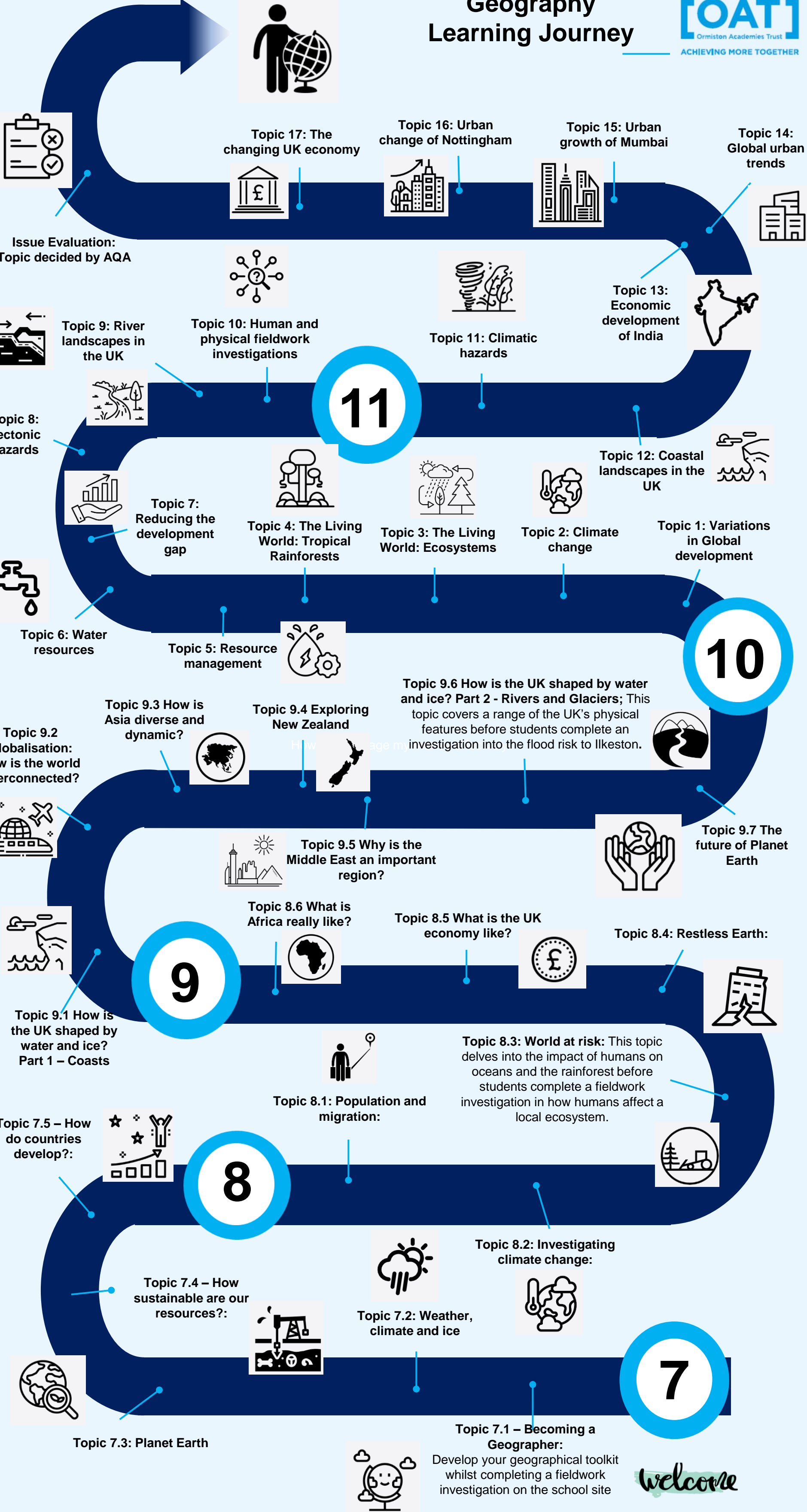


Geography Learning Journey



Issue Evaluation:
Topic decided by AQA

Topic 17: The changing UK economy

Topic 16: Urban change of Nottingham

Topic 15: Urban growth of Mumbai

Topic 14: Global urban trends



Topic 13: Economic development of India



Topic 9: River landscapes in the UK

Topic 10: Human and physical fieldwork investigations

Topic 11: Climatic hazards

Topic 8: Tectonic hazards



11

Topic 12: Coastal landscapes in the UK



Topic 7: Reducing the development gap

Topic 4: The Living World: Tropical Rainforests

Topic 3: The Living World: Ecosystems

Topic 2: Climate change

Topic 1: Variations in Global development



Topic 6: Water resources

Topic 5: Resource management



10

Topic 9.6 How is the UK shaped by water and ice? Part 2 - Rivers and Glaciers; This topic covers a range of the UK's physical features before students complete an investigation into the flood risk to Ilkeston.



Topic 9.2 Globalisation: How is the world interconnected?

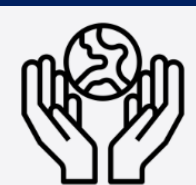
Topic 9.3 How is Asia diverse and dynamic?



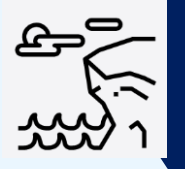
Topic 9.4 Exploring New Zealand



Topic 9.5 Why is the Middle East an important region?



Topic 9.7 The future of Planet Earth



Topic 9.1 How is the UK shaped by water and ice? Part 1 - Coasts

9

Topic 8.6 What is Africa really like?



Topic 8.5 What is the UK economy like?



Topic 8.4: Restless Earth:



Topic 7.5 - How do countries develop?:



8

Topic 8.1: Population and migration:



Topic 8.3: World at risk: This topic delves into the impact of humans on oceans and the rainforest before students complete a fieldwork investigation in how humans affect a local ecosystem.



Topic 7.4 - How sustainable are our resources?:



Topic 7.2: Weather, climate and ice

Topic 8.2: Investigating climate change:



Topic 7.3: Planet Earth

Topic 7.1 - Becoming a Geographer:

Develop your geographical toolkit whilst completing a fieldwork investigation on the school site



welcome