

OIEA Careers Bulletin

Welcome to our second careers bulletin. Our aim is to keep parents and careers up to date with all aspects of careers education and give you a better insight into what we are doing in the academy to ensure all our students are as prepared as they can be for life after school. In October 2019, the academy was awarded the Quality in Careers Standard as an indicator of the strong career's education being delivered to students at OIEA and our compliance with the Department for Education's statutory guidance.

In this issue:

- What are the Gatsby Benchmarks?
- Careers Education in PSHE
- Using START to find out about the local area
- Supporting your child with their future

GATSBY BENCHMARKS

The framework for success in careers

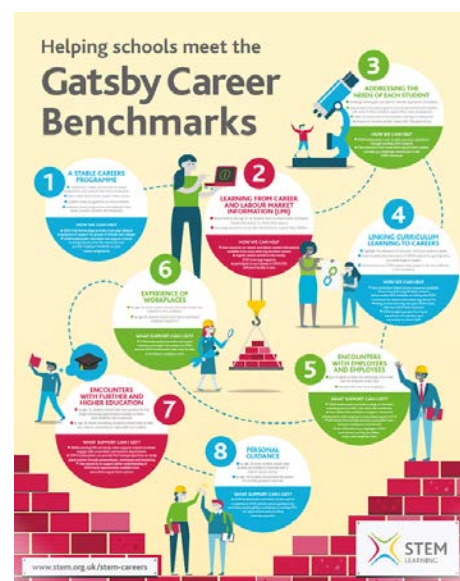
The Gatsby Benchmarks are the 'framework of 8 guidelines that define the best careers provision in secondary schools.'

Schools are expected to measure themselves against these benchmarks in order to assess whether the careers provision in schools is fit for purpose. The Quality in Careers Standard is also assessed in line with these 8 benchmarks and awarded to schools that are meeting the requirements.

What does this all mean for your child?

As an academy, we want to ensure that every student is prepared for their future after completing their GCSE's. By ensuring that all our careers-related activities are measured against the Gatsby Benchmarks we can easily identify any gaps in our provision to ensure that we are meeting the needs of all students.

If you would like further information on the Gatsby Benchmarks, The Careers & Enterprise Company's website is an excellent starting place.



"The Gatsby Benchmarks have now been put at the heart of the Careers Strategy, with an expectation that all schools will begin working toward the Benchmarks."

Claudia Harris, CEO
The Careers and Enterprise Company

OIEA WEBSITE

We have just launched our new website, <https://www.oiea.co.uk>. You can find out all about our CEAG/Careers support if you click on for students and click on careers guidance. Take some time to explore this area as it will be really useful when you have choices to make throughout your time here at OIEA.



Is a software package that supports with all things CEAIG. You can find out all about the top employment sectors in our local areas, what future jobs there will be in Derbyshire and what regional employment there is. You can find all this out without even logging in—simply click on this link. <https://d2n2.startprofile.com/page/explore-derbyshire>

It is a great way to find out about all the opportunities in the local area to support you with your post 16 choices. You can also use START to support you with you study choices, search for apprenticeships and jobs as well as how to write CVS. Use this link to access all of this information.

<https://careers.startprofile.com/page/home-page>

CAREERS DURING PSHE

As an Academy we have a statutory duty to *‘ensure that all registered pupils, from year 8 to year 13, are provided with independent and impartial careers guidance’*. We do this in many different ways, but one of the approaches that ensures we meet this requirement are the PSHE careers lessons. Each year group has a scheme of learning that helps them consider who they are and what they want to do in the future. Below is the plan for delivering careers education in PSHE during this academic year.



Year 7	Year 8	Year 9	Year 10	Year 11
Lessons on aspirations, self-esteem, wants and needs as well as a topic on developing.	Further developing skills in budgeting and saving as well as investigating entrepreneurialism.	Investigate workplace skills and employability. We help students to prepare for one of their key milestones – choosing their options.	Start to look at career options and post 16 opportunities and how to build an effective CV.	Start to look at career options and post 16 opportunities and how to build an effective CV. Get support with how to apply for college courses and apprenticeships and how to prepare.