

Cells

01 July 2020

Recap activity: Describe the seven different life processes

LO: How plant and animal cells are similar and different?

Developing: Identify the cell nucleus, cell membrane and cytoplasm on a diagram of a cell.

Securing: List the main features commonly found in plant and animal cells.

Exceeding: Justify the classification of an organism as an animal or plant based on cell structure.

Extending: Suggest reasons for differences between plant and animal cells (in terms of their function).

The 7 Life Processes

Movement

Reproduction

Sensitivity

Growth

Respiration

Excretion

Nutrition



Cells

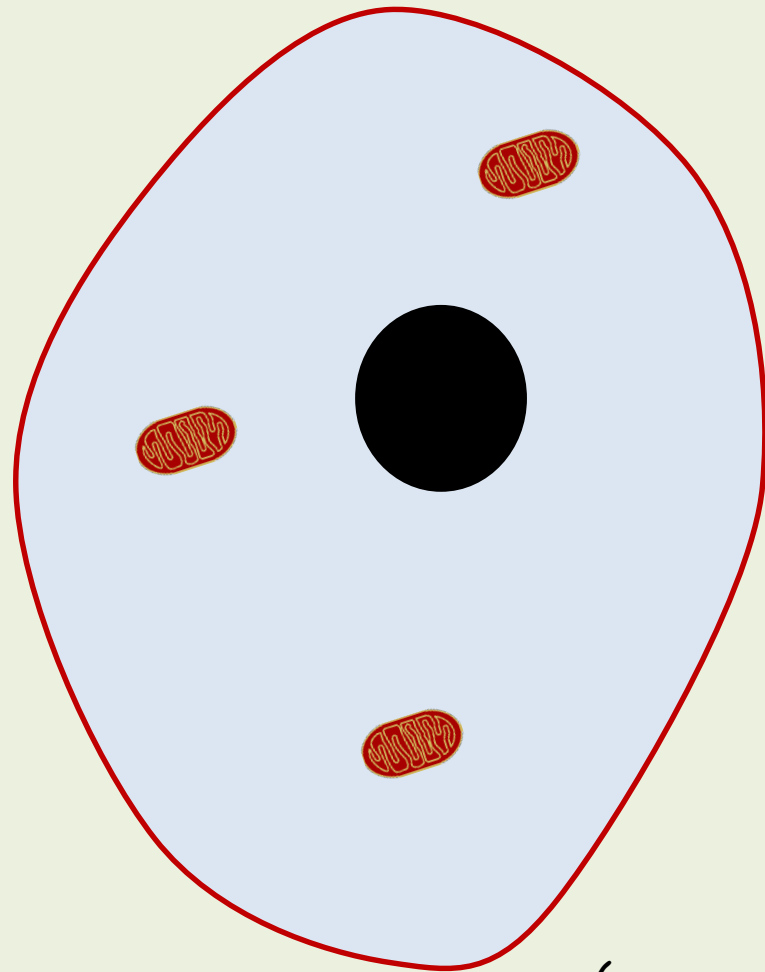
Basic building blocks of life





Cells

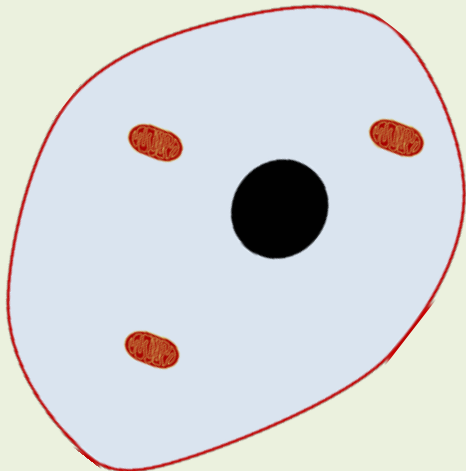
An **animal** cell:



*(a very simplified
version)*

Animal Cells

Starting at developing, make your way through the tasks looking at animal cells. **Use the accompanying information sheets to help you.**



Developing

Draw a diagram of an animal cell.

Securing

Label the **cell membrane**, **nucleus** and **cytoplasm**.

Exceeding

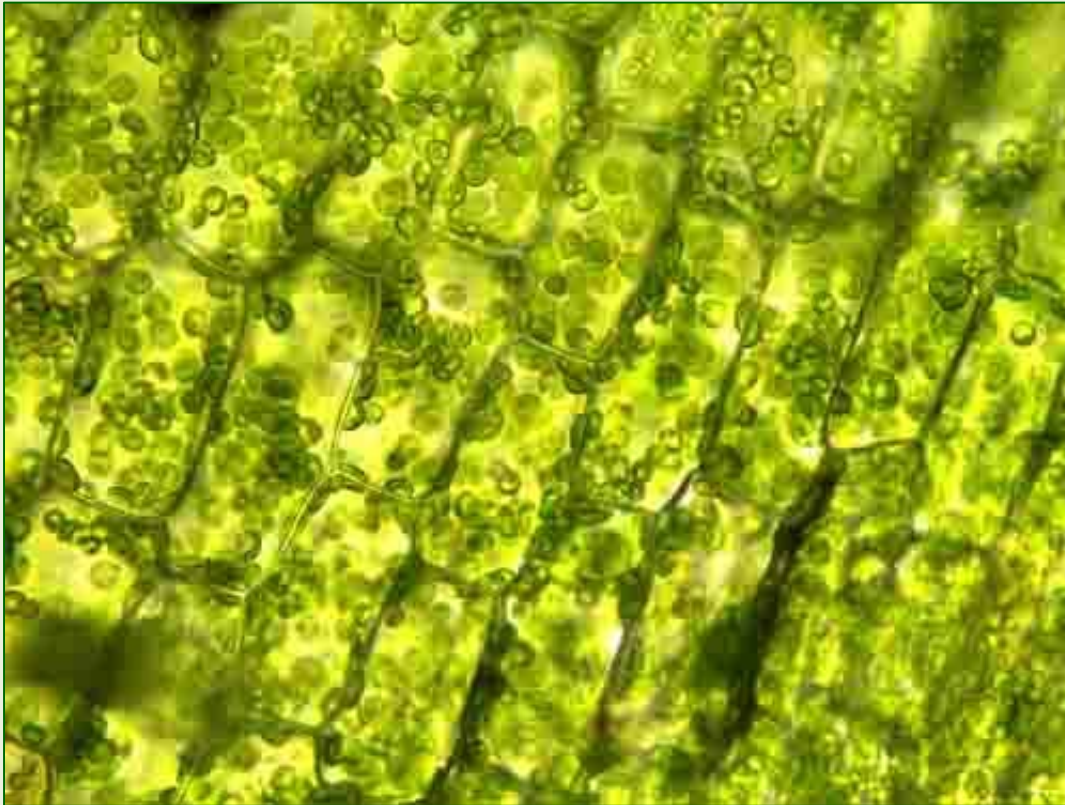
Add a simple description for what each part of the cell does.

Extending

Draw and label the mitochondria on your diagram. Describe what happens here.

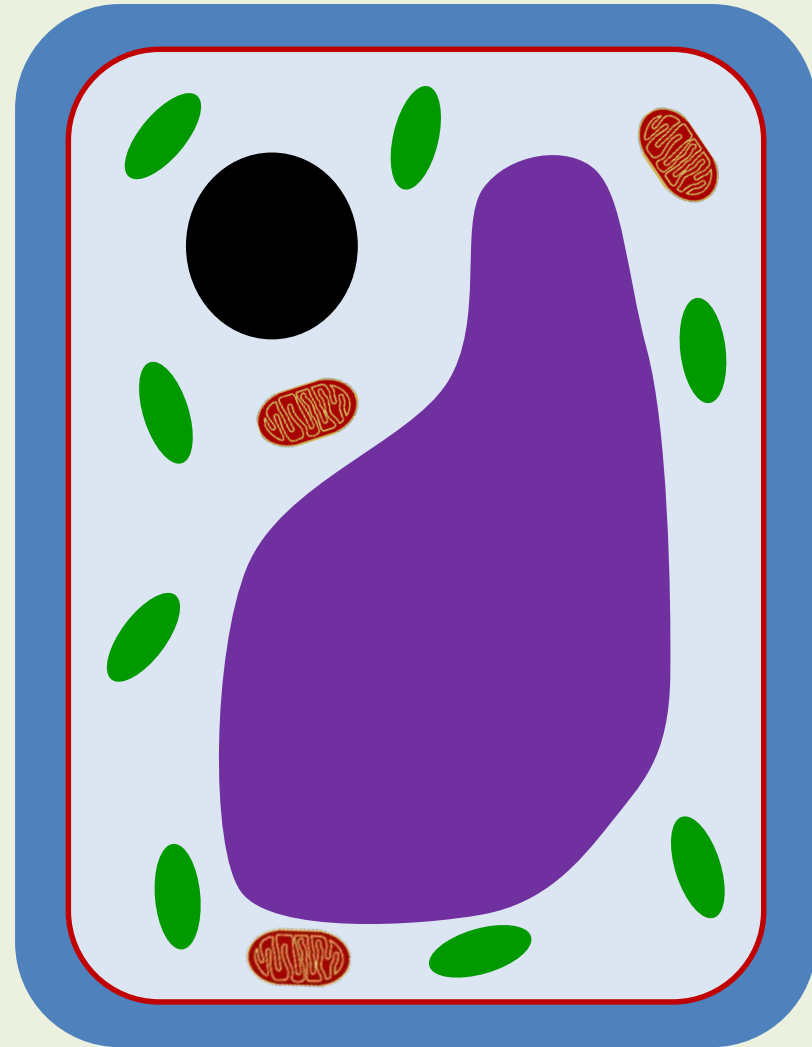
Cells

Plant cells are different to animal cells.



Cells

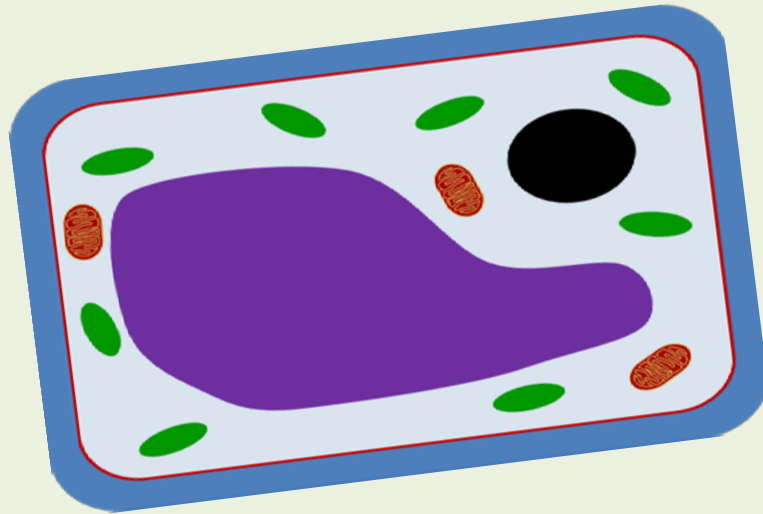
A plant cell:



(a very simplified version)

Plant Cells

Starting at developing, make your way through the tasks looking at plant cells. **Use the accompanying information sheets to help you.**



Developing

Draw a diagram of a plant cell.

Securing

Label the cell membrane, nucleus, cytoplasm, cell wall, chloroplasts and vacuole.

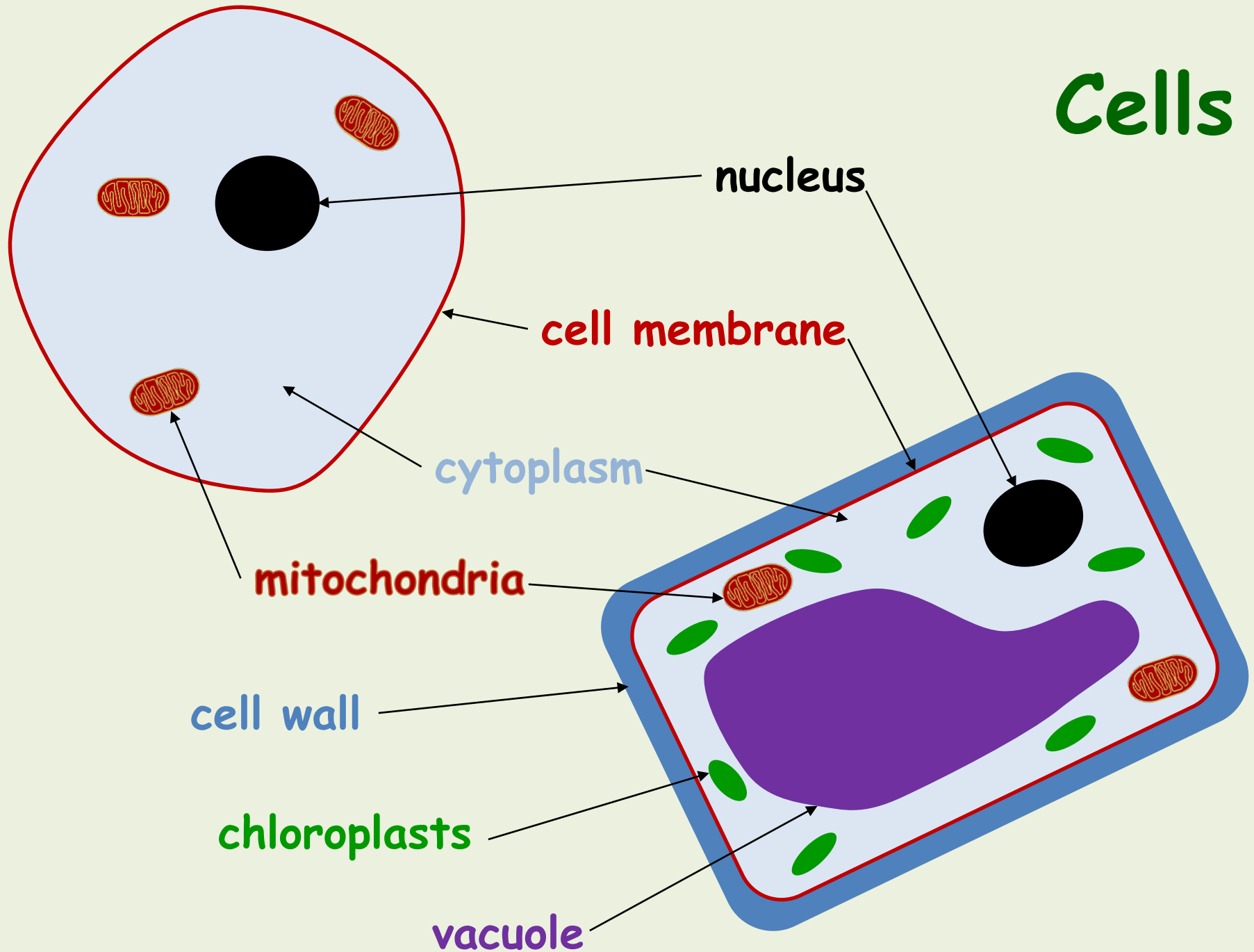
Exceeding

Add a simple description for what each part of the cell does.

Extending

Describe how animal and plant cells are different.

Cells



Comparing Cells

	PLANT CELL	ANIMAL CELL
Has a cell wall	✓	✗
Has a nucleus	✓	✓
Has a cell membrane	✓	✓
Has a vacuole	✓	✗
Has chloroplasts	✓	✗
Has a cytoplasm	✓	✓
Has mitochondria	✓	✓



Match up the **organelles** to what they do inside the **cell**:

Nucleus

Contains cell sap and keeps the cell firm.

Cytoplasm

Controls what happens in the cell and carries genetic information.

Cell Membrane

Controls what gets in and out of the cell.

Chloroplast

Jelly like substance where chemical reactions happen.

Vacuole

Where respiration happens (how organisms get energy).

Cell Wall

Gives the cell structure and supports it.

Mitochondria

Where photosynthesis happens (how plants get their food).

ANSWERS:

Nucleus

Controls what happens in the cell and carries genetic information.

Cytoplasm

Jelly like substance where chemical reactions happen.

Cell Membrane

Controls what gets in and out of the cell.

Chloroplast

Where photosynthesis happens (how plants get their food).

Vacuole

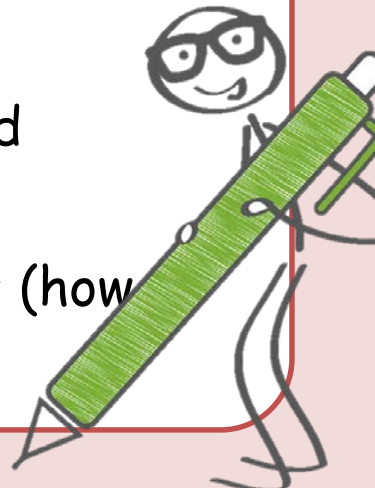
Contains cell sap and keeps the cell firm.

Cell Wall

Gives the cell structure and supports it.

Mitochondria

Where respiration happens (how organisms get energy).



Decide whether the statements are **true** or **false**.

Extending:
Correct the
False ones.

